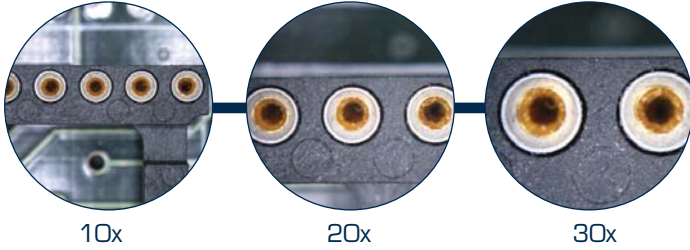




Ω

iSeries

# iLoupe



26700-501S

- **World's first compact portable field microscope, available anytime & anywhere**
- **2 in 1 device. Standard Digital Camera & a High Power Microscope**
- **Built in Adjustable LED Lighting**
- **High Resolution 6 mega-pixel Canon Camera**
- **10x, 20x and 30x objective lenses available giving a magnification range of 10x to 150x**
- **Cost Effective Offering with Powerful Functions**

The first compact portable field microscope utilizes a digital camera with a patented module and specially designed lenses with built in high intensity adjustable LED Lights. The iLoupe can clearly capture objects from 6mm to 10 microns. This 2 in 1 device allows you to quickly interchange between a standard digital camera and a microscope. You can now carry a portable field microscope and a digital camera in your pocket with ease. Three objective lenses are available to meet a variety of different applications. Using the optical and digital zoom range of the camera the following magnification ranges are produced:

- With the 10x objective lens: 10x to 60x**
- With the 20x objective lens: 20x to 100x**
- With the 30x objective lens: 30x to 150x**

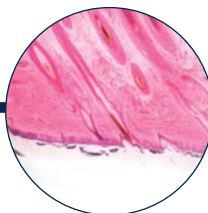
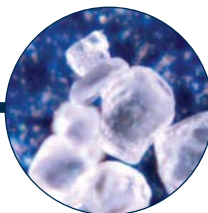
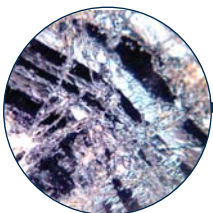
The iLoupe is available in Starter Pack and Pro Pack Versions. The iLoupe Starter Pack includes the Cannon 6 Mega Pixel Camera with the Adapter Ring, Module and a 10x-60x Objective Lens. The iLoupe ProPack includes the Cannon 6 Mega Pixel Camera with the Adapter Ring, Module and three objective lenses (10x-60x), (20x-100x) and (30x-150x). Both the Starter Pack and Pro Pack are supplied in a Plastic Carrying Case.

## Applications

QC Inspection  
Research

Medical  
Forensics

Archaeology  
Forestry and Much More



Visit [www.aveninc.com](http://www.aveninc.com) to see more images taken with the iLoupe.

iLoupe  
Accessories



iLoupe  
Carrying Case  
26700-506



iLoupe Pro Pack  
26700-501P

Specifications

|                                | iLoupe Starter Pack                          | iLoupe Pro Pack   |
|--------------------------------|--|-------------------|
| Objective Lenses included      | 10x  | 10x, 20x, and 30x |
| Magnification Range            | 10x -60x                                     | 10x-150x          |
| Field of View                  | 10x: 16x12mm, 20xx: 9x6.5mm, 30xx: 5.7x4.5mm |                   |
| Lens Design                    | Schott No-Lead Optical Grade Glass           |                   |
| Coating                        | Multi-Layer Anti-Reflective Coating          |                   |
| Built in Dimmable Illumination | 4 White LED Lights                           |                   |
| Batteries                      | Two Li-ion Rechargeable Batteries Included   |                   |



iLoupe Stand  
26700-505

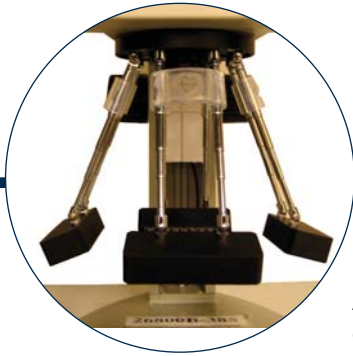
| Order #           | Description   |
|-------------------|---|
| <b>26700-501S</b> | <b>iLoupe Starter Pack</b> w/ Plastic Carrying Case |
| <b>26700-501P</b> | <b>iLoupe Pro Pack</b> w/ Plastic Carrying Case     |
| <b>26700-505</b>  | <b>iLoupe Stand</b>                                 |
| <b>26700-506</b>  | <b>iLoupe Carrying Case</b>                         |



01

iSeries

# iVue



New Patent Pending  
Antenna Lighting System  
available on 2007 Models



26700-133

**View, Capture, Save Images with this all in one digital video inspection system.**

**Quickly save images to the built in SD Card**

**3 Mega-Pixel CMOS Camera**

**No additional hardware or software required.**

**RCA Port available to attach a 15" or 17" Flat Panel Monitor for increased resolution**

**Simple to use plug and play system**

**Relieves eye strain and increases productivity.**

**Ideal for inspection, collaboration, teaching and documentation**

**Available in Micro & Macro Configurations**

**Antenna Lighting System allows for infinite adjustments, providing crisp clear images**

The innovative iVue is an all-in-one, plug and play video inspection system. The system allows you to view, capture and save an image without the use of any external hardware or software. Images can be saved to an SD card provided with unit or use the built-in USB connection to transfer images to a PC. The high resolution 8.4" LCD screen allows for easy viewing. Three basic on screen measurement tools are standard. (cross hair, x-y axis and full screen grid in blue, red and white ) For accurate measurement an X-Y measurement stage is available. The stage comes mounted to the base of the stand. The iVue has incorporated as standard two of the most popular lighting options. The first is our new *patent pending* Antenna Lighting System. The second is a circular bottom mounted back light built into the unit's base. An optional stainless steel dual arm ball bearing stand is also available. The iVue comes complete with Software for image capture to PC, all required cables, SD Card and protective cover.

# iVue Optional Configurations



iVue on Boom Stand  
26700-134DBS

**New Patent Pending  
Antenna Lighting System  
available on 2007 Models  
for crisp clear images**



iVue Micro w/Gliding  
Measurement Stage  
26700-133STA

with X-Y and Rotating Gliding Stage with Micrometers for high accuracy measurement (0.001mm) Range of movement 25 x 25mm. iVue Macro is not available with a measuring stage as high accuracy measurement is not possible with the Macro lens

## Specifications

|                           | iVue Macro                       | iVue Micro                 |
|---------------------------|----------------------------------|----------------------------|
| Magnification Range       | 4.7x to 29x                      | 19x to 128x                |
| Field of View             | (27.2 x 35)-(4.4 x 5.7) mm       | (6.8 x 8.9)-(1.0 x 1.3) mm |
| Working Distance          | 170mm                            | 88mm                       |
| Digital Magnification     | 1x to 4x                         |                            |
| Display Screen Size & Res | 8.4" TFT LCD (800 x 600 pixels ) |                            |
| Camera                    | 3 Mega-Pixel CMOS                |                            |
| Illumination              | Antenna Lighting System          |                            |

| Order #             | Description   |
|---------------------|---|
| <b>26700-133</b>    | <b>iVue Macro</b>                                       |
| <b>26700-134</b>    | <b>iVue Micro</b>                                       |
| <b>26700-133STA</b> | <b>iVue Micro with Measurement Stage</b>                |
| <b>26700-133DBS</b> | <b>iVue Macro with S.S. Dual Arm Ball Bearing Stand</b> |
| <b>26700-134DBS</b> | <b>iVue Micro with S.S. Dual Arm Ball Bearing Stand</b> |

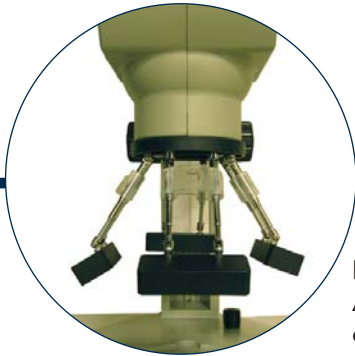




7

iSeries

# iScope



New Patent Pending  
Antenna Lighting System  
available on 2007 Models



26800B-385

**View, Capture, Save Images with this 2 in 1 Stereo Zoom Microscope and Digital Video Inspection System**

**Quickly save images to the built in SD Card**

**3 Mega-Pixel CMOS Camera**

**No additional hardware or software required.**

**RCA Port available to attach a 15" or 17" Flat Panel Monitor for increased resolution**

**Simple to use plug and play system**

**Relieves eye strain and increases productivity.**

**Ideal for inspection, collaboration, teaching and documentation**

**Antenna Lighting System allows for infinite adjustments, providing crisp clear images**

The iScope is an innovative all in one plug and play inspection system featuring a stereo zoom microscope combined with image viewing and capture feature built on top of the scope. This gives operators the ability to view images in 3D using the binocular microscope and quickly switch to viewing the image on an 8.4" LCD monitor. The system allows you to view, capture and save images without the use of any external hardware or software. Images can be saved to an SD Card provided with the unit or use the built in USB connection and transfer images to a PC. Three basic on screen measurement tools are standard. (cross hair, x-y axis and full screen grid in blue, red and white ). For accurate measurement an X-Y gliding stage with micrometers is also available. The stage comes mounted to the base of the stand. The iScope has incorporated as standard two of the most popular lighting options. The first is our new *patent pending* Antenna Lighting System. The second is a circular bottom mounted back light built into the unit's base. An optional stainless steel dual arm ball bearing stand is also available. 10x Eyepieces with rubber eye guards, Software for image capture to PC, SD Card, 0.5x Objective lens, Protective Cover and all required cables are included.

# iScope Optional Configurations



iScope on Boom Stand  
26800B-385DBS

**New Patent Pending  
Antenna Lighting System  
available on 2007 Models  
for crisp clear images**



iScope Micro w/Gliding  
Measurement Stage  
26800B-385DBS

with X-Y and Rotating Gliding Stage  
with Micrometers for high accuracy  
measurement (0.001mm) Range of  
movement 25 x 25mm

## Specifications

|                      | <b>iScope (3.25x-22.5x)</b> | <b>iScope (6.5x - 45x)</b>  |
|----------------------|-----------------------------|-----------------------------|
| Magnification Range  | 3.25x to 22.5x              | 6.5x to 45x                 |
| Zoom Ratio           | 1:7                         | 1:7                         |
| Field of View        | 4.9mm to 38.9mm             | 2.45mm to 19.45 mm          |
| Working Distance     | 150mm                       | 75mm                        |
| Screen Magnification | 7.5x to 52x (800x600pixels) | 15x to 104x (800x600pixels) |
| Camera               | 3 Mega-Pixel CMOS           |                             |
| Illumination         | Antenna Lighting System     |                             |

| Order #              | Description                               |
|----------------------|---|
| <b>26800B-385</b>    | <b>iScope 3.25x-22.5x</b>                 |
| <b>26800B-386</b>    | <b>iScope 6.5x-45x</b>                    |
| <b>26800B-385DBS</b> | <b>iScope (3.25x-22.5x) on Boom Stand</b> |
| <b>26800B-386DBS</b> | <b>iScope (6.5x-45x) on Boom Stand</b>    |
| <b>26800B-385STA</b> | <b>iScope with Measuring Stage</b>        |



00

iSeries

# i360



- **3D 360 degree rotational view with a 45 degree oblique viewing angle.**
- **Zoom 50x-300x with great depth of field  
Built in Adjustable LED Lighting**
- **Optional 55 degree oblique viewer available**
- **Built in LED lighting with intensity control**
- **Rotate clockwise or counter clockwise**
- **Ideal for SMT, Semiconductor IC, Medical Devices,  
Research and Failure Analysis**

i360 3D Microscope is designed to give you a 3D perspective with rotation to your inspection process. The user can now view the specimen from all angles without having to move it. This helps reduce evaluation times and improves QC process.

i360 also comes with our optional PC Link software that allows for image capture and measurement. It can be also be connected directly to a PC with our optional USB Camera. Our USB Camera comes with our Infinity Analyze Imaging Software. Infinity analyze allows you to quickly and easily process images which can be entered into an archive application or saved in a variety of formats. Measurements and annotations are easy to perform, highly reproducible and can be customized to your needs.

i360 standard version comes with a 50x-300x lens with a 45 degree oblique viewer, high resolution analog color CCD Camera with BNC and S-Video Outputs, Control Box for controlling the LED light intensity, rotation (i.e. counter clockwise or clockwise), and rotational speed, 15" color flat panel monitor, and stand with focusing control. All cables and adapters are also included.

# i360 Optional Accessories

- USB Cameras with 1.4, and 2.0 megapixel resolutions
- PC Link Software for image capture, processing and archiving
- 55 Degree Oblique Viewer



## Specifications

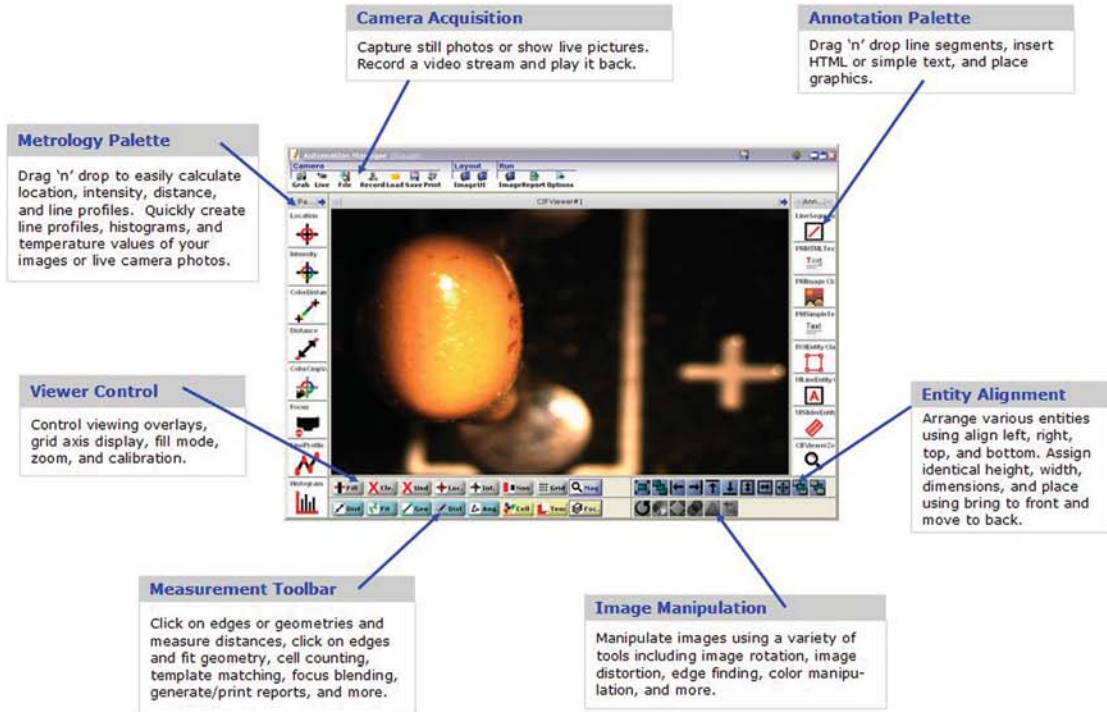
|                     |                            |
|---------------------|----------------------------|
| Magnification Range | 50x-300x                   |
| Lighting            | LED with Intensity Control |
| Camera              | 1/3" CCD Color Camera      |
| Working Distance    | 55.5mm                     |
| Depth of Field      | 8mm to 1.2mm               |
| Field of View       | 9.2mm to 1.3mm             |

| Order #             | Description  |
|---------------------|--|
| <b>26700-106</b>    | <b>i360 3D Microscope</b> with 45 degree Viewer, 1/3" CCD Color Camera, Controller, Stand with Focus Control, and 15" Color Flat Panel Monitor.                                |
| <b>26700-106-14</b> | <b>i360 3D Microscope</b> with 45 Degree Viewer, USB 1.4 Mega Pixel Camera with Infinity Analyze Imaging Software, Controller, Stand with Focus Control                        |
| <b>26700-106-20</b> | <b>Same as 26700-106-14</b> USB 1.4 Megapixel Camera replaced with our USB 2.0 Megapixel Camera  |
| <b>26100-403</b>    | <b>PC Link Software</b> for Image Capture, Processing and Archiving for use with our Analog CCD Camera included in system 26700-106. Basic measurement functions are included. |
| <b>26700-106-10</b> | <b>55 Degree Oblique Viewer</b>  |





# iGauge Video Imaging and Measurement Software



iGauge allows you to measure, annotate and analyze your images with just a few clicks. iGauge will dramatically increase the capability of any video camera based system . **Test Drive iGauge by downloading a 30 day trial version from our website [www.aveninc.com](http://www.aveninc.com)**

## SIMPLE AND EASY TO USE

### Features:

- Image Capture, Record & Playback
- Viewing Tools
- Toolbar Geometry /Metrology
- Geometry Tools
- Annotation Tools
- Metrology Tools
- Image Processing Tools
- Reporting Tools
- Image Manipulation Tools
- Intuitive Interface

| Order # | Description |
|---------|-------------|
|---------|-------------|

|           |                       |
|-----------|-----------------------|
| 26100-401 | iGauge Video Software |
|-----------|-----------------------|



# Aven Micro Zoom Video Inspection System VIS-6000



- **Designed for high magnification and high resolution applications**
- **Modular design allows you to vary magnification, field of view, and working distance**
- **Easily upgradeable**
- **Magnification Range: 21x-133x  
(41- 267x with the 0.5x lens removed)**
- **Working Distance: 143mm (5.6") to 187mm (7.36")  
(81-93mm with the 0.5x lens removed)**
- **Field of View: 12.7mm (0.5") to 1.93mm (0.076")  
(8.58-1.33m with the 0.5x lens removed)**

**Applications**  
Inspection of a wide range of objects such as integrated circuits, solder joints, surface analysis, quality control and laboratory inspection

**Customization**  
A variety of adapters & auxiliary lens, cameras, lighting options, video capture cards, and stands are available to provide a custom solution.

**Magnification Range**  
5x to 2735x possible.  
Call for more information.

| Order #          | Description  |
|------------------|--|
| <b>26700-102</b> | <b>VIS 6000</b> with 1/3" CCD Camera, 14" Flat Panel Monitor, 150 watt FOI with Ring Light. Mounted on the Standard Stand with 11"x18" base. Optional PC Link Software for Image Capture available |



Micro Zoom Video Inspection System on Articulating Arm  
26700-102-15



Micro Zoom Video Inspection System on Boom Stand  
2700-102-10

## Specifications

| Lens Attachment | Mag/Field of View (mm) | .5x Adapter |       | 1x Adapter |      | 2x Adapter |       | 5x Adapter |       |
|-----------------|------------------------|-------------|-------|------------|------|------------|-------|------------|-------|
|                 |                        | Low         | High  | Low        | High | Low        | High  | Low        | High  |
| 0.25x           | Magnification          | 5x          | 33x   | 10x        | 67x  | 21x        | 134x  | 52x        | 329x  |
|                 | Field of View          | 68.64       | 10.64 | 34.32      | 5.32 | 17.16      | 2.66  | 6.88       | 1.08  |
| 0.5x            | Magnification          | 10x         | 67x   | 21x        | 133x | 41x        | 267x  | 104x       | 671x  |
|                 | Field of View          | 34.32       | 5.32  | 17.16      | 2.67 | 8.58       | 1.33  | 3.43       | 0.53  |
| 0.75x           | Magnification          | 16x         | 100x  | 31x        | 200x | 62x        | 400x  | 155x       | 1016x |
|                 | Field of View          | 17.16       | 2.67  | 8.58       | 1.33 | 4.29       | 0.67  | 1.72       | 0.27  |
| None            | Magnification          | 21x         | 133x  | 41x        | 267x | 83x        | 531x  | 207x       | 1317x |
|                 | Field of View          | 17.16       | 2.67  | 8.58       | 1.33 | 4.29       | 0.67  | 1.72       | 0.27  |
| 1.5x            | Magnification          | 31x         | 200x  | 62x        | 400x | 124x       | 808x  | 312x       | 1976x |
|                 | Field of View          | 11.43       | 1.78  | 5.72       | 0.89 | 2.86       | 0.44  | 1.14       | 0.18  |
| 2x              | Magnification          | 41x         | 267x  | 83x        | 531x | 165x       | 1078x | 413x       | 2735x |
|                 | Field of View          | 8.58        | 1.33  | 4.29       | 0.67 | 2.15       | 0.33  | 0.86       | 0.13  |

\* Note magnification data calculated based on 1/3" CCD camera and a 14" LCD Monitor.

### Order #

### Description

**26700-102-10**

**VIS 6000** – Same system as 2700-102 but mounted on a Dual Arm Ball Bearing Stand with a 1.4 Megapixel USB Camera with Image Capturing and Measurement Software. *Monitor not Included.*

**26700-102-15**

**VIS 6000** – Same system as 2700-102-10 but mounted on an Articulating Arm with Mounting Clamp. *Monitor not Included.*



# Aven Micro Zoom Video Inspection System

for High Accuracy Field of View Measurement



**Detented Lens System for Easy Calibration**

**Magnification Range: 38x-266x**

**Working Distance: 3.9"**

**Field of View: 9.3mm (0.4") to 1.3mm (0.05") (Larger field of views can be obtained with different camera chip sizes and lens configurations.)**

**3.3 Megapixel USB Digital CCD Camera**

**Imaging Software Included for High Accuracy Measurement, Annotation Advanced Image Processing. See pageXXX**

## Applications

Defect Analysis, Semiconductor Inspection, Metrology, Quality Control & Laboratory Inspection.

## Customization

A variety of adapters & auxiliary lens, cameras, lighting options, video capture cards, and stands are available to provide a custom solution.

## Video System Includes

- Detented Lens System with Zoom Ratio 0.65x-4.5x
- Stand with Focus Mount (Base 11"x13" Vertical Post 16")
- 3.3 Megapixel USB Digital CCD Camera
- Imaging & Measurement Software
- 150 Watt Fiber Optic Illuminator with Shadow Free Annular Ring Light

*\*PC with Monitor Required for Above System*

Order #

Description

26700-102-20

Micro Zoom Video Inspection System for HAFVM



# Aven Macro Zoom Video Inspection System



Macro Zoom Video Inspection System on Boom Stand

2700-103



2700-103-10

- **Designed for Large Field of View Applications**
- **6x Macro Zoom Lens with Adjustable Iris and Close-Up Lens**
- **Magnification: Up to 61.9x at 5.5" Working Distance on a 14" Monitor**
- **Field of View: 224mm (8.8") to 298mm (11.7") (at 48" working distance allows inspection of large samples.)**
- **Adjustable Focus: 5" to Infinity**

### Applications

Quality Assurance, biomedical imaging or assembly applications where an easy to view, sharp and true-to-life magnified image is required.

### Customization

A variety of adapters & auxiliary lens, cameras, lighting options, video capture cards, and stands are available to provide a custom solution. See chart below for more information on magnification & field of view ranges possible.

### Specifications w/Close-Up Lens

| Working Distance | FOV(mm) @ Low Mag. | FOV(mm) @ High Mag. | Magification Range |
|------------------|--------------------|---------------------|--------------------|
| 5.5"             | 20x27              | 3.2x4.3             | 9.9X - 61.9X       |
| 7"               | 32x43              | 5.4x7.6             | 6.2X - 36.7X       |
| 8"               | 39x52              | 6.5x8.6             | 5.1X - 30.5X       |
| 9"               | 45x60              | 7.6x10.3            | 4.4X - 26.1X       |
| 10"              | 49x65              | 8.6x11.9            | 4X - 23X           |
| 11"              | 54x72              | 9.2x12.4            | 3.7X - 21.5X       |

### w/o Close-Up Lens

| Working Distance | FOV(mm) @ Low Mag. | FOV(mm) @ High Mag. | Magification Range |
|------------------|--------------------|---------------------|--------------------|
| 11"              | 42.6x56.7          | 7.6x10.3            | 4.6X - 26X         |
| 24"              | 107x143            | 18x23.8             | 1.9X - 11X         |
| 36"              | 168x224            | 29.7x39.4           | 1.2X - 5X          |
| 48"              | 224x298            | 37.8x50.2           | 0.9X - 5.3X        |

| Order #             | Description  |
|---------------------|--|
| <b>26700-103</b>    | <b>6x Macro Lens</b> mounted on a SS Dual Arm Ball Bearing Boom Stand, 1/3" CCD Camera, 14" LCD Monitor, PC Link Device and Software for Image Capture |
| <b>26700-103-10</b> | Same System as 26700-103, except lens system is mounted on a Standard Stand  |

\*Please note, in most applications additional illumination is not required for this lens system.

# Stereo Zoom Microscopes

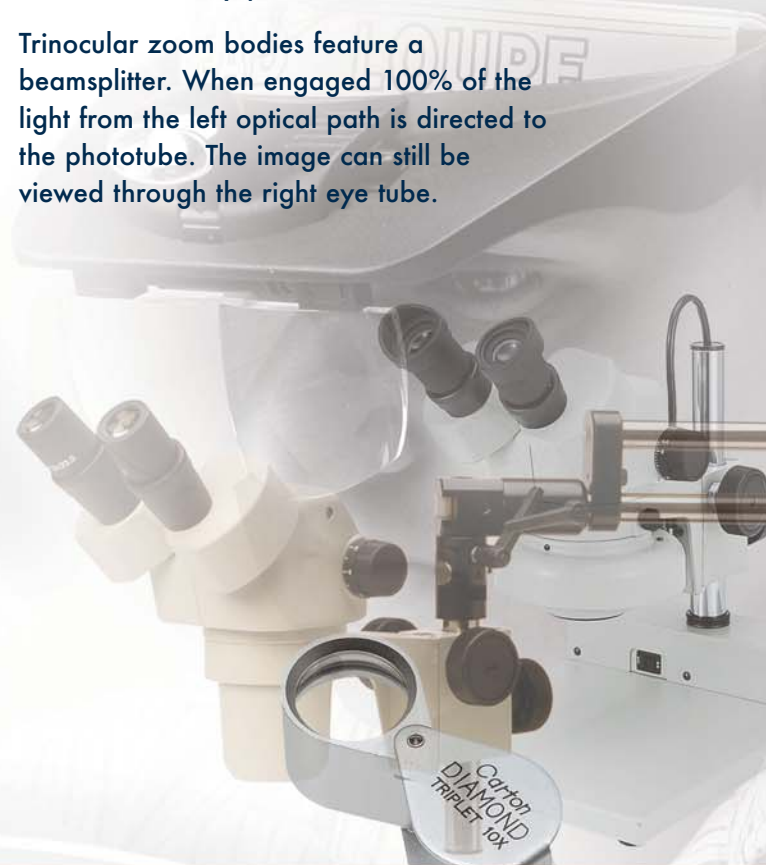
Our stereo zoom and stereo microscopes are manufactured exclusively for Aven by Carton Optical of Japan. Carton Optical has been manufacturing microscopes for over 40 years. Their microscopes have gained a reputation for providing the very best in optical performance, durability, and versatility. With a diverse selection of bodies, stands, and lighting techniques a system can be configured to fit any application.

## To configure your system select:

1. The microscope body that meets your magnification, field of view and working distance requirements. Note with a combination of eyepieces and auxiliary lens you can tailor a system to meet your requirements.
2. Focusing Mount
3. Stand ( please take into account the working distance and the height of the stand)
4. Illumination, Fiber Optic, Fluorescent or LED.
5. Camera and or adapter if you are using a trinocular body
6. Monitor if necessary

## All stereo zoom bodies listed below feature:

- Crisp high resolution precision optics that provide an erect, non-reversed stereoscopic image
- Binocular eyepieces inclined at 45 degrees for fatigue free viewing
- Diopter adjustments on both eyepieces
- Interpupillary distance adjustment 52mm to 75mm
- Body can be rotated a full 360 degrees and locked in any position
- Trinocular zoom bodies feature a beamsplitter. When engaged 100% of the light from the left optical path is directed to the phototube. The image can still be viewed through the right eye tube.



# SPZ-50 Series

Outstandingly large zoom ratio 7.46:1-best zoom ration in this class

Total zoom magnification from 6.7x to 50x

Field of View 34.3mm to 3.6mm (1.35" x 0.14")

Working distance 108mm (4.25") - the best in this class

Magnification range of 2.25x to 200x with optional lenses

17mm (0.67") high eye point wide field 10x eyepieces (field number 23) for comfortable viewing even for operators with eyeglasses.

Trinocular version has diopter adjustment on vertical tube for fine focusing of image

*\* Note specifications mentioned above are with Wide Field 10x eyepieces.*



SPZ-50

Binocular stereo zoom body with 10x eyepieces, rubber eye guards and dust cover

18

Stereo Zoom Microscopes

## Optical Data

| Eyepiece       | DHW10X (F.N. 23) |            |            |            |            |
|----------------|------------------|------------|------------|------------|------------|
| Auxiliary Lens | Nil              | w/0.5x     | w/0.75x    | w/1.6x     | w/2x       |
| Magnifications | 6.7x-50x         | 3.35x-25x  | 5x-37.5x   | 10.72x-80x | 13.4x-100x |
| Working Dist.  | 108mm            | 240mm      | 132mm      | 50mm       | 41mm       |
| Field of View  | 34.3-4.6mm       | 68.9-9.2mm | 45.7-6.1mm | 21.4-2.8mm | 17.1-2.3mm |

| Eyepiece       | DHW15X (F.N. 15) |             |              |             |            |
|----------------|------------------|-------------|--------------|-------------|------------|
| Auxiliary Lens | Nil              | w/0.5x      | w/0.75x      | w/1.6x      | w/2x       |
| Magnifications | 10.05x-75x       | 5.02x-37.5x | 7.53x-56.25x | 16.08x-120x | 20.1x-150x |
| Working Dist.  | 108mm            | 240mm       | 132mm        | 50mm        | 41mm       |
| Field of View  | 22.3-3mm         | 44.7-6mm    | 29.8-4mm     | 16-1.8mm    | 11.1-1.5mm |

| Eyepiece       | DHW20X (F.N. 11.4) |          |            |             |            |
|----------------|--------------------|----------|------------|-------------|------------|
| Auxiliary Lens | Nil                | w/0.5x   | w/0.75x    | w/1.6x      | w/2x       |
| Magnifications | 13.4x-100x         | 6.7x-50x | 10.05x-75x | 21.44x-160x | 26.8x-200x |
| Working Dist.  | 108mm              | 240mm    | 132mm      | 50mm        | 41mm       |
| Field of View  | 17-2.2mm           | 34-4.5mm | 22.6-3mm   | 10.6-1.4mm  | 8.5-1.1mm  |



SPZT-50

Trinocular stereo zoom body with 10x eyepieces, rubber eye guards and dust cover

| Order # | Description        |
|---------|--------------------|
| SPZ-50  | SPZ-50 Binocular   |
| SPZT-50 | SPZT-50 Trinocular |



# DSZ-44 Series



**DSZ-44**

Binocular stereo zoom body with 10x wide field eyepieces, Rubber eye guards and dust cover



**DSZT-44**

Trinocular stereo zoom body with 10x wide field eyepieces, Rubber eye guards and dust cover

10 Stereo Zoom Microscopes

**Zoom Ratio of 4.4:1**

**Total Magnification from 10x to 44x**

**Field of View of 23mm to 5.3mm (0.90" to 0.20")**

**Working distance 90mm (3.54")**

**Magnification range of 2.5x to 140.8x with optional lenses**

**Wide Field 10x Eyepieces (field number 23)**

*\* Note specifications mentioned above are with Wide Field 10x eyepieces.*

## Optical Data

| Eyepiece              | DSW5X (F.N. 22.5) |           |             |          |
|-----------------------|-------------------|-----------|-------------|----------|
| <b>Auxiliary Lens</b> | Nil               | w/0.5x    | w/0.75x     | w/1.6x   |
| <b>Magnifications</b> | 5x-22x            | 2.5x-11x  | 3.75x-16.5x | 8x-35.2x |
| <b>Working Dist.</b>  | 90mm              | 150mm     | 105mm       | 45mm     |
| <b>Field of View</b>  | 22.5-5.1mm        | 45-10.2mm | 30-6.8mm    | 14-3.1mm |

| Eyepiece              | DSW10X (F.N. 23) |           |            |            |
|-----------------------|------------------|-----------|------------|------------|
| <b>Auxiliary Lens</b> | Nil              | w/0.5x    | w/0.75x    | w/1.6x     |
| <b>Magnifications</b> | 10x-44x          | 5x-22x    | 7.5x-33x   | 16x-70.4x  |
| <b>Working Dist.</b>  | 90mm             | 150mm     | 105mm      | 45mm       |
| <b>Field of View</b>  | 23-5.2mm         | 46-10.4mm | 30.6-6.9mm | 14.3-3.2mm |

| Eyepiece              | DSW15X (F.N. 15) |          |              |            |
|-----------------------|------------------|----------|--------------|------------|
| <b>Auxiliary Lens</b> | Nil              | w/0.5x   | w/0.75x      | w/1.6x     |
| <b>Magnifications</b> | 15x-66x          | 7.5X-33X | 11.25X-49.5X | 24X-105.6X |
| <b>Working Dist.</b>  | 90mm             | 150mm    | 105mm        | 45mm       |
| <b>Field of View</b>  | 15-3.4mm         | 30-6.8mm | 20-49.5mm    | 9.3-2.1mm  |

| Eyepiece              | DSW20X (F.N. 11.4) |            |             |            |
|-----------------------|--------------------|------------|-------------|------------|
| <b>Auxiliary Lens</b> | Nil                | w/0.5x     | w/0.75x     | w/1.6x     |
| <b>Magnifications</b> | 20x-88x            | 10x-44x    | 15x-66x     | 32x-140.8x |
| <b>Working Dist.</b>  | 90mm               | 150mm      | 105mm       | 45mm       |
| <b>Field of View</b>  | 11.4-2.5mm         | 22.8-5.1mm | 15.2-3.45mm | 7.1-1.6mm  |

## Order # Description

|                |                           |
|----------------|---------------------------|
| <b>DSZ-44</b>  | <b>DSZ-44 Binocular</b>   |
| <b>DSZT-44</b> | <b>DSZT-44 Trinocular</b> |



# DSZ-70 Series

- For high magnification applications
- Zoom Ratio of 3.5: 1
- Total Magnification from 20x to 70x
- Field of View of 10mm to 2.8mm (0.39" to 0.11")
- Working distance 80mm (3.15")
- Magnification range of 5x to 224x with optional lenses
- Wide Field 10x Eyepieces (field number 20)

\* Note specifications mentioned above are with Wide Field 10x eyepieces.

## Optical Data

| Eyepiece       | DSW5XZ (F.N. 20) |          |             |           |
|----------------|------------------|----------|-------------|-----------|
| Auxiliary Lens | Nil              | w/0.5x   | w/0.75x     | w/1.6x    |
| Magnifications | 10x-35x          | 5x-17.5x | 7.5x-26.25x | 16x-56x   |
| Working Dist.  | 80mm             | 120mm    | 85mm        | 41mm      |
| Field of View  | 10-2.9mm         | 20-5.7mm | 13.3-3.8mm  | 6.2-1.7mm |

| Eyepiece       | DSW10XZ (F.N. 20) |          |            |           |
|----------------|-------------------|----------|------------|-----------|
| Auxiliary Lens | Nil               | w/0.5x   | w/0.75x    | w/1.6x    |
| Magnifications | 20x-70x           | 10x-35x  | 15x-52.5x  | 32x-112x  |
| Working Dist.  | 80mm              | 120mm    | 85mm       | 41mm      |
| Field of View  | 10-2.8mm          | 20-5.7mm | 13.3-3.8mm | 6.2-1.7mm |

| Eyepiece       | DSW15X (F.N. 15) |           |              |           |
|----------------|------------------|-----------|--------------|-----------|
| Auxiliary Lens | Nil              | w/0.5x    | w/0.75x      | w/1.6x    |
| Magnifications | 30x-105x         | 15x-52.5x | 22.5x-78.75x | 48x-168x  |
| Working Dist.  | 80mm             | 120mm     | 85mm         | 41mm      |
| Field of View  | 7.5-2.1mm        | 15-4.2mm  | 10-2.8mm     | 4.6-1.3mm |

| Eyepiece       | DSW20X (F.N. 11.4) |            |           |          |
|----------------|--------------------|------------|-----------|----------|
| Auxiliary Lens | Nil                | w/0.5x     | w/0.75x   | w/1.6x   |
| Magnifications | 40x-140x           | 20x-70x    | 30x-105x  | 64x-224x |
| Working Dist.  | 80mm               | 120mm      | 85mm      | 41mm     |
| Field of View  | 5.7-1.6mm          | 11.4-3.2mm | 7.6-2.1mm | 3.5-1mm  |

## Order # Description

|                |                           |
|----------------|---------------------------|
| <b>DSZ-70</b>  | <b>DSZ-70 Binocular</b>   |
| <b>DSZT-70</b> | <b>DSZT-70 Trinocular</b> |



DSZ-70

Binocular stereo zoom body with 10x wide field eyepieces, Rubber eye guards and dust cover



DSZT-70

Trinocular stereo zoom body with 10x wide field eyepieces, Rubber eye guards and dust cover

20

Stereo Zoom  
Microscopes



# NSW Series

## Stereo Microscopes

21

Stereo Zoom  
Microscopes



Large stage to accommodate large parts. A long life and low temperature 9W fluorescent lamp is used for the built-in incident light.  
**Magnification: 10x & 30x**

| Order # | Description         |
|---------|---------------------|
| 26876   | NSW-30PF Microscope |



Features a large stage to accommodate large parts. For illumination, we recommend our fluorescent ring lights or our fiber optic illuminator with our annular ring light. If an auxiliary lens is not used a ring light adapter will be required to install the fluorescent ring light or the annular ring light.  
**Magnification: 10x & 30x**

| Order # | Description        |
|---------|--------------------|
| 26877   | NSW-30P Microscope |

- Dual Magnification of 10x & 20x, or 10x & 30x or 20x & 40x bodies available
- Single Magnification of 10x or 20x bodies available
- 10x Wide Field Eyepieces standard (field number 23)
- Field of View: 23mm (0.91") at 10x, 11.5mm (0.45") at 20x, 7.6mm (0.30") at 30x and 5.7mm (0.22") at 40x

| Order # | Description                               |
|---------|---|
| NSW-1   | Single 10x Stereo Body                    |
| NSW-2   | Single 20x Stereo Body                    |
| NSW-20  | Dual Magnification 10x & 20x Stereo Body  |
| NSW-30  | Dual Magnification 10x & 30x Stereo Body  |
| NSW-40  | Dual Magnification 20x & 40x Stereo Body  |
| NSW-620 | Dual Magnification 6x & 20x Stereo Body** |

\* Each Body comes with Wide Field 10x eyepieces  
Rubber Eye Guards and dust cover

\*\* NSW-620 will not work with stand T

# Preconfigured Systems

Shown below are some of our popular systems or you can configure a system to match your application

## Stand Systems



|  |                   |
|--|-------------------|
| <b>Order #</b>   | <b>26800B-302</b> |
| <b>Model DSZ-44PF</b>  |                   |
| DSZ-44 Stereo Zoom Binocular Microscope 10x to 44x, 10x eyepieces mounted on Stand P. For illumination we recommend fluorescent or LED Ring Lights or our fiber optic illuminators |                   |
| Stand base is 220mm x 284mm  |                   |



|  |                   |
|--|-------------------|
| <b>Order #</b>   | <b>26800B-381</b> |
| <b>Model SPZ-50PFM</b>   |                   |
| SPZ-50 Stereo Zoom Binocular Microscope 6.7x to 50x, 10x eyepieces mounted on Stand PFM. Has built in 9W Fluorescent ring light. |                   |
| Stand base is 220mm x 284mm  |                   |

## Boom Stand Systems



|  |                      |
|--|----------------------|
| <b>Order #</b>   | <b>26800B-374-10</b> |
| <b>SPZ-50 Stereo Zoom Binocular Microscope</b>   |                      |
| 6.7x to 50x, 10x eyepieces, 0.5x lens, Ring Light Adapter, and LED Ring Light with Intensity Control mounted on our Double Arm Stainless Steel Ball Bearing Boom Stand |                      |



|  |                      |
|--|----------------------|
| <b>Order #</b>   | <b>26800B-375-10</b> |
| <b>SPZT-50 Stereo Zoom Trinocular Microscope</b>   |                      |
| 6.7x to 50x 10x eyepieces, 0.5x lens, Ring Light Adapter, Fiber Optic Illuminator with Annular Ring Light, USB Infinity 1, 1.3 Megapixel Camera with Infinity Image Analysis Software mounted on our Double Arm Stainless Steel Ball Bearing Stand. Computer not included. |                      |

22  
Stereo Zoom  
Microscopes



# Preconfigured Systems

Shown below are some of our popular systems or you can configure a system to match your application

## Articulating Arm Systems



**Order # 26800B-374-15**

### SPZT-50 Stereo Zoom Trinocular Microscope

6.7x to 50x, 10x eyepieces, 0.5x lens, Ring Light Adapter, 150 watt Fiber Optic Illuminator with an Annular Ring Light, mounted on an articulating arm with 17" x 20" base

Stereo Zoom Microscopes

## Examples of other Popular Systems

Systems shown below can be ordered using individual part #s. Call us, we can help configure a system to meet your requirements



Binocular Scope on Single Arm Boom Stand with Fiber Optic Illumination



Binocular Scope on Single Arm Deluxe Stand with 17"x20" base



Trinocular Scope on Stand PF with Built in Fluorescent Illumination and USB Camera



Binocular Scope on Deluxe Double Arm SS Ball Bearing Stand with 17"x20" base



Binocular Scope mounted on Stand P with Fiber Optic Illumination



NSW Series Microscope mounted on Stand PF.



# Optional Accessories

## Eyepiece Lenses and Rubber Eye Guards



| Order #    | Description  |
|------------|--|
| 26800B-444 | <b>DSW-5X eyepieces</b> for DSZ-44, DSZT-44 and NSW series bodies. F.N. 22.5 |
| 26800B-446 | <b>DSW-5X eyepieces</b> for DSZ-70 and DSZT-70 series bodies. F.N. 20.       |



| Order #       | Description  |
|---------------|--|
| 26800B-441    | <b>DSW-10X eyepieces</b> for DSZ-44, DSZT-44 and NSW series bodies. F.N. 23. |
| 26800B-441-10 | <b>DSW-10X eyepieces</b> for SPZ-50 and SPZT-50 series bodies. F.N. 23.      |
| 26800B-445    | <b>DSW-10X eyepieces</b> for DSZ-70 and DSZT-70 series bodies. F.N. 20.      |



| Order #       | Description  |
|---------------|--|
| 26800B-442    | <b>DSW-15X eyepieces</b> for DSZ-44, DSZT-44, DSZ-70, DSZT-70 and NSW series bodies. F.N. 15 |
| 26800B-442-10 | <b>DSW-15X eyepieces</b> for SPZ-50 and SPZT-50 series bodies. F.N. 15.                      |



| Order #       | Description  |
|---------------|--|
| 26800B-433    | <b>DSW-20X eyepieces</b> for DSZ-44, DSZT-44, DSZ-70, DSZT-70 and NSW series bodies. F.N. 11.4 |
| 26800B-433-10 | <b>DSW-20X eyepieces</b> for SPZ-50 and SPZT-50 series bodies. F.N. 11.4.                      |

### Rubber Eye Guards

| Order #       | Description                         |
|---------------|-------------------------------------|
| 26800B-447    | Rubber Eye Guards for DSW eyepieces |
| 26800B-477-10 | Rubber Eye Guards for DHW eyepieces |

\*\* Eyepieces listed are above sold in pairs only.

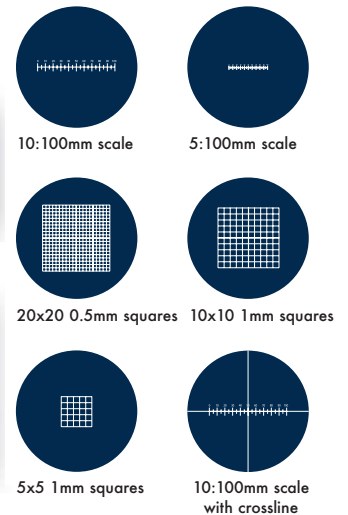
## Focusing Eyepiece 10x with Reticle



| Order #    | Description                    |
|------------|--------------------------------|
| 26800B-446 | <b>10x with 5:100mm scale</b>  |
| 26800B-455 | <b>10x with 10:100mm scale</b> |



| Order #    | Description                                    |
|------------|--|
| 26800B-457 | <b>10x with 20 x 20 0.5mm squares</b>          |
| 26800B-458 | <b>10x with 10 x 10mm 1mm squares</b>          |
| 26800B-459 | <b>10x with 10:100mm scale with cross line</b> |



\*Above eyepieces are for the DSZ/NSW series bodies

To order eyepieces for the SPZ Series bodies please **add -10** to the end of the above mentioned part numbers.



# Optional Accessories

25 Stereo Zoom Microscopes

## Auxiliary Objective Lenses



| Order #           | Description                 |
|-------------------|-----------------------------|
| <b>26800B-461</b> | <b>Auxiliary lens 0.5x</b>  |
| <b>26800B-462</b> | <b>Auxiliary lens 0.75x</b> |



| Order #           | Description                |
|-------------------|----------------------------|
| <b>26800B-463</b> | <b>Auxiliary lens 1.6x</b> |
| <b>26800B-464</b> | <b>Auxiliary lens 2x</b>   |



| Order #           | Description                                    |
|-------------------|--|
| <b>26800B-465</b> | <b>Lens Cover</b> for protection of objectives |

| Order #           | Description  |
|-------------------|--|
| <b>26800B-460</b> | <b>Adapter</b> to mount Fluorescent Ring Light or Fiber Optic Annular Ring Light |

\* Please note 0.5x lens cannot be used with SPZ series bodies with stand P and PF. Cannot be used with stands T and TL and with the NSW series with stand P

\*\* 2x lens cannot be used with the DSZ and NSW series bodies.

## Camera Adapters



| Order #           | Description   |
|-------------------|---|
| <b>26800B-455</b> | <b>Adapter</b> to Mount CCD Camera to our Trinocular bodies |

\* Various Adapters are available for mounting Digital Cameras. Please call with the type camera you want to use with our trinocular microscopes.

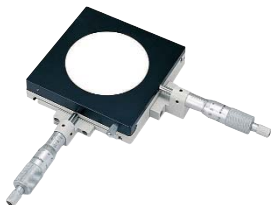
## Gliding Stages



| Order #  | 26800B-475 |
|--|------------|
| Stage size 350mm x 250mm x 103mm. Base Size: 520mm x 480mm. Range of movement 360mm x 418mm. |            |



| Order #   | 26800B-476 |
|---|------------|
| Stage size: 300mm x 210mm x 40mm. Base Size 250mm x 250mm. range of movement 250mm x 250mm. |            |



| Order #  | 26800B-471 |
|--|------------|
| Gliding stage with attachments for micrometers. Mitutoyo No. 150-192 (MHN1-25). Size 114mm x 114mm. Range of movement 25mm x 25mm. |            |



| Order #  | 26800B-474 |
|--|------------|
| Rota table. Size 135mm. Range of movement 25mm x 25mm. |            |



| Order #           | Description  |
|-------------------|--|
| <b>26800B-472</b> | Size 140mm x 114mm. Range of movement 94mm x 66mm. |

# Illumination

## Standard Frequency Florescent Ring Lights



Aven fluorescent ring lights are designed for applications requiring a high quality illuminator. Provides 360° shadow free illumination. Our reflector housing is cast from high quality aluminum alloy (except for model 26200B-201) for durable and cool operation. Features a 17 Watt lamp with 5000 hours of lamp life. (5600 kelvin). Color: Putty. Operates at 115VAC

### Order # Description

|                   |  |
|-------------------|--|
| <b>26200B-201</b> | <b>Fluorescent Ring Light</b> Economy, 8 watt Lamp   |
| <b>26200B-202</b> | <b>Fluorescent Ring Light</b> Standard, 17 watt Lamp |
| <b>26200B-206</b> | <b>Fluorescent Ring Light</b> ESD Safe, 17 watt Lamp |
| <b>26200B-203</b> | <b>Fluorescent Ring Light</b> with UV Lamp           |

## White LED Ring Light w/Brightness Control



Designed to be used with standard microscopes and video lenses. It provides a stable bright light with 54 LEDs. These long life LEDs operate at very low temperature, are flicker free and does not change color over time. 110V

### Order # Description

|                   |   |
|-------------------|---|
| <b>26200B-210</b> | <b>White LED Ring Light with Brightness Control</b> |
|-------------------|---|

## White LED Ring Light w/Brightness & Sector Control



Designed to be used with standard microscopes and video lenses. Has a 7 step brightness control feature and four lighting modes, 1/4, 2/4, 3/4, and Full. Excellent for applications requiring a high degree of lighting control. Incorporates 60 Long Life LEDs that are flicker free and operate at low temperature and does not change color over time. 110V.

### Order # Description

|                   |  |
|-------------------|--|
| <b>26800B-211</b> | <b>White LED Ring Light</b> with Brightness & Sector Control |
|-------------------|--|

## Model 21 AC Fiber Optic Illuminator



### Features

- High output 150 Watt EKE lamp
- Universal non-slip coupling
- Variable intensity control from 0 to 100%
- Rugged design with thermal switch and safety cut-off
- Easy lamp change
- Integrated mounting capabilities
- Custom configurations available

### Specifications

Input voltage.....110 VAC  
 Lamp adjustment range.....0 to 100%  
 Lamp life.....250 to 10,000 hours  
 Weight.....7.5 lbs. (3.4 kgs.)  
 Dimensions.....7.13"L x 3.53"H x 7.91"D

### Order # Description

|                   |   |
|-------------------|---|
| <b>26200A-201</b> | <b>Model 21 AC Fiber Optic Illuminator</b>            |
| <b>26200A-212</b> | <b>Adapter</b> for 1.125" ID Ring Light               |
| <b>26200A-217</b> | <b>Adapter</b> for 2.31" ID Ring Light and Goosenecks |



# Illumination

## Model 150 Fiber Optic Illuminator



### Features

- High quality ball bearing fan for low noise and vibration
- High output 150 watt bulb
- Variable intensity control
- Easy lamp change
- Color/ Daylight Filters available
- Color Beige

### Specifications

|                        |                     |
|------------------------|---------------------|
| Input voltage.....     | 110 VAC             |
| Color Temperature..... | 3250 kelvin         |
| Lamp life.....         | 200-2000 hours      |
| Weight.....            | 7.5 lbs. (3.4 kgs.) |
| Dimensions.....        | 7.0" x 7.5" x 6.5"  |

| Order #           | Description                              |
|-------------------|--|
| <b>26200A-200</b> | <b>Model 150 Fiber Optic Illuminator</b> |
| <b>26200A-212</b> | <b>Adapter</b> for 1.125" ID Ring Light  |

27 Stereo Zoom Microscopes

## Fiber Optic Ring Lights



### Features

- Uniform Lighting
- Streamlined Design
- 360° shadow free illumination
- 3 thumb screw for easy mounting
- Accepts polarizer and darkfield adapters
- Black anodized aluminum housing
- Crimped Stainless Steel terminations
- 36" cable length

| Order #           | Description  |
|-------------------|--|
| <b>26200A-402</b> | <b>Ringlight 2.31" ID</b> Can be mounted on all SPZ and DSZ and NSW Series Microscopes |
| <b>26200A-403</b> | <b>Ringlight 1.125"ID</b> Can be mounted on Video Lenses                               |

## Fiber Optic Goosenecks



These light guides are constructed with high quality glass fiber optics and provide the highest degree of adjustable and interference free uniform illumination of focused white light. Focusable lenses allow for variable spot light adjustments making these ideal for situations where intense illuminations is required. Our light guides are offered in a standard stainless steel obedient sheathing which offers "stay-put" positioning.

| Order #           | Description   |
|-------------------|---|
| <b>26200A-523</b> | <b>Double Gooseneck</b> with Focusing lens 18" Long |

## Fiber Optic Area Backlights



These high-output, uniform backlights are made of the highest quality components and offer a sleek, slim design, which makes them highly versatile for mounting in tight spaces. The housing consists of black, electrocoated steel and the sheathing is PVC covered metal hose. Backlights have a ±10% uniformity. 36" long cable length.

| Order #           | Description                                    |
|-------------------|--|
| <b>26200A-531</b> | <b>FOA Backlight 2" x 2"</b> (50.8 x 50.8mm)   |
| <b>26200A-532</b> | <b>FOA Backlight 4" x 4"</b> (101.6 x 101.6mm) |
| <b>26200A-533</b> | <b>FOA Backlight 4" x 6"</b> (101.6 x 152.4mm) |
| <b>26200A-534</b> | <b>FOA Backlight 6" x 8"</b> (152.4 x 203.2mm) |



# CCD & CMOS Cameras

## High Resolution DSP CCD Color Cameras



Our color cameras use single integration type CCD complemented by a digital signal processing system to provide both high quality images and a host of compensation functions. These cameras are ideal for machine vision, video inspection and microscopy applications.

### Highlights

- CCD Total Pixels: 881(h) x 508 (v)
- Resolution: 470 TVL / 580 TVL Enhanced
- On Screen Display
- 26100-100 has S-Video and Composite Outputs
- 26100-102 has Y/C and Composite Outputs
- C & CS Mount
- Detail Specs at [www.aveninc.com](http://www.aveninc.com)

### Order # Description

|                  |  |
|------------------|--|
| <b>26100-100</b> | <b>1/3" CCD Camera</b> with power supply |
| <b>26100-102</b> | <b>1/2" CCD Camera</b> with power supply |

## Infinity 1 CMOS Color Cameras



The Infinity CMOS USB 2.0 cameras are designed to be a cost effective, versatile solution for a variety of microscopy imaging applications. Features include auto white balance, full exposure, control, programmable gain, sub-windowing and region of interest. It is excellent for documentation and archiving applications.

### Highlights

- 1 and 3 Megapixel. 6 also available upon request
- Perfect for documentation and archiving applications
- Fast frame rate
- C-mount
- Infinity Analyze Software Included. For more details of this software please visit our website at [www.aveninc.com](http://www.aveninc.com)

### Order # Description

|                  |   |
|------------------|---|
| <b>26100-215</b> | <b>Infintiy 1 CMOS 1.3 Megapixel Camera</b> |
| <b>26100-216</b> | <b>Infintiy 1 CMOS 3.1 Megapixel Camera</b> |

### Specifications

| Megapixel | Resolution  | FPS | Sensor    |
|-----------|-------------|-----|-----------|
| 1.3       | 1280 x 1024 | 15  | 1/2" CMOS |
| 3.1       | 2040 x 1536 | 6   | 1/2" CMOS |

## Infinity 2 CCD Color Cameras



Equipped with a high quality Sony CCD Sensor, these USB 2.0 cameras offer excellent sensitivity, high dynamic range and a 12-bit digital output. Features include binning, auto white balance, full exposure control, programmable gain, sub-windowing and region of interest. It is ideal for higher-end scientific, medical, ophthalmic and life science applications.

### Highlights

- 1, 2 and 3 megapixel resolution
- Higher dynamic range for quantitative analysis
- Fast frame rate
- Low noise electronics
- C-Mount
- Infinity Analyze Software Included. For more details of this software please visit our website at [www.aveninc.com](http://www.aveninc.com)

### Order # Description

|                  |                                 |
|------------------|---------------------------------|
| <b>26100-220</b> | <b>1.4 Megapixel CCD Camera</b> |
| <b>26100-221</b> | <b>2.0 Megapixel CCD Camera</b> |
| <b>26100-222</b> | <b>3.3 Megapixel CCD Camera</b> |

### Specifications

| Megapixel | Resolution  | FPS | Sensor      |
|-----------|-------------|-----|-------------|
| 1.4       | 1390 x 1040 | 15  | 1/2" CCD    |
| 2.0       | 1616 x 1216 | 12  | 1/1.8" CCD  |
| 3.0       | 2080 x 1536 | 5   | 1/1.8" CCSD |



# Frame Grabbers

## FlashBus Spectrim



**FlashBus Spectrim**

### Highlights

- Bus mastering video frame grabber
- Composite & S-Video Inputs
- TriMedia Video Processor
- High quality video capture
- SDK Kit available

### Order # Description

|                  |                          |
|------------------|--------------------------|
| <b>26100-302</b> | <b>FlashBus Spectrim</b> |
|------------------|--------------------------|

# LCD Monitors

## 14" LCD Monitor



### Features:

- 750 ohm cable TV input for connecting to Cable TV
- Left and Right Audio outputs for external speakers
- L/R audio input jacks to connect a sound card
- L/R Audio input to connect to an external AV output
- S-Video input
- 15 pin D-Sub input to connect monitor to a PC
- Max Resolution 1024 x 768 pixels
- On Screen Menu to control a variety of functions
- Plug & Play capable
- Remote and AC/DC Adapter Included.

### Order # Description

|                  |                        |
|------------------|------------------------|
| <b>26700-403</b> | <b>14" LCD Monitor</b> |
|------------------|------------------------|

## 17" LCD Monitor



Produces only the sharpest and most brilliant color images. Featuring easy to use OSD controls and built in speakers you will find this monitor both easy to use and a pleasure to look at. This monitor offers a maximum resolution of 1280 x 1024 pixels and a refresh rate up to 75KH translating into a flicker free that is easy on your eyes.

### Comes with

- 12V DC adapter /power chord
- D-Sub 15 pin VGA connector cable
- Audio Cables

### Inputs

- Video Input: 15-pin D sub/ AV/ S-Video
- DC plug on monitor right side

### Order # Description

|                  |                        |
|------------------|------------------------|
| <b>26100-402</b> | <b>17" LCD Monitor</b> |
|------------------|------------------------|

Stereo Zoom Microscopes

# Stands and Focus Mounts

## Focus Mount



Focus mount to hold our SPZ, DSZ and NSW Series bodies. Rack & Pinion mechanism allows for precise focusing over a 55mm travel. Coarse focus mechanism incorporates a slip clutch and tension adjustment. Fits a 25mm mounting post and has an opening to accept bodies of diameter 74mm (2.9")

| Order # | Description |
|---------|-------------|
|---------|-------------|

|               |                    |
|---------------|--------------------|
| <b>SCW-PA</b> | <b>Focus Mount</b> |
|---------------|--------------------|

30

Stereo Zoom  
Microscopes

## Stand Type PF with Focus Mount and Built in Fluorescent Light



### Features:

- Large stage 220mm(8.66") x 284mm (11.18") to accommodate a variety of parts
- Built in 9 watt low temperature fluorescent light in focus mount
- Length of Post 250mm (9.84")

| Order # | Description |
|---------|-------------|
|---------|-------------|

|                  |  |
|------------------|--|
| <b>Stand PF</b>  | For DSZ-44, DSZT-44, and NSW Series Bodies |
| <b>Stand PFM</b> | For SPZ-50 and SPZT-50 Series Bodies       |
| <b>Stand PFL</b> | For DSZ-70 and DSZT-70 Series Bodies       |

## Pole Type Stand with Focus Mount



### Features:

- Large stage 220mm (8.66") x 284mm (11.18") to accommodate a variety of parts
- Length of Post 250mm (9.84")

| Order # | Description |
|---------|-------------|
|---------|-------------|

|                |                                     |
|----------------|-------------------------------------|
| <b>Stand P</b> | For SPZ, DSZ, and NSW Series Bodies |
|----------------|-------------------------------------|



# Stands and Focus Mounts

## Stand Type T and L with Focus Mount

01

Stereo Zoom Microscopes



### Features:

- Transmitted and Incident Lights are built in the Type T stand as shown
- Type T stand has Fluorescent 9 watt incident light and Tungsten Transmitted light
- Base 160mm x 219mm (6.30" x 8.62")
- Stage Plate: Frosted glass plate (diameter 80mm (3.15")) and Frosted blue filter (diameter 37mm ( 1.46"))
- Stand Type L same as stand T but Incident Light is Tungsten (not shown)
- Rack and Pinion Focus Mount, tension control pin included

### Order # Description

|                |  |
|----------------|--|
| <b>Stand T</b> | For DSZ-44, DSZT-44, and NSW Series Bodies |
| <b>Stand L</b> | For DSZ-44, DSZT-44, and NSW Series Bodies |

## Standard Boom Stand with Mounting Post



### Features:

- Perfect for stationary video and microscopy applications
- Heavy Duty Steel Base 10" x 10" x " (254mm x 254mm x 19mm ), 21lbs
- 16" (406mm) Vertical Post with 16" (406mm) Horizontal Post. Diameter of Post and Bar 1-3/16" (30.16mm). Nickel plated
- Safety Clamp Included
- Mounting Post with tilt feature for Focus Mount SCW-PA
- Sturdy and stable
- Requires focusing mount to mount microscope bodies

### Order # Description

|                   |   |
|-------------------|---|
| <b>26800B-433</b> | <b>Standard Boom Stand</b> with Mounting Post |
|-------------------|---|

## Deluxe Boom Stand with Mounting Post



26800-433A

### Features:

- Perfect for stationary video and microscopy applications especially where vibrations can disrupt your work
- Heavy Duty Steel Base 10" x 10" x " (254mm x 254mm x 19mm), 21lbs or 17" x 20" Heavy Duty Base , 27lbs to accommodate large parts on base
- 16" (406mm) x 1-1/2" OD (38mm ) stainless steel vertical post
- 18" (457mm) x 1-1/2" OD(38mm) aluminum horizontal post
- Post with tilt feature for Focus Mount SCW-PA included
- Quick release red anodized aluminum safety clamp
- Optional 25" Vertical Post and 25" Horizontal Bars available
- Optional table mount and C-clamp mounts available

### Order # Description

|                    |   |
|--------------------|---|
| <b>26800B-433A</b> | <b>Deluxe Boom Stand</b> with Tilt Mounting Post and 10" x 10" base |
| <b>26800B-433B</b> | <b>Deluxe Boom Stand</b> with Tilt Mounting Post and 17" x 20" base |



26800-433B



# Stands and Focus Mounts

## Standard Dual Arm Ball Bearing Boom Stand with Mounting Post



### Features:

- Stability of the standard boom stand but with ultra smooth movement of a ball bearing slide
- Great for inspection applications where magnification adjustment and the ability to move across a specimen are important
- Heavy duty base 11" x 10" x 1.25" (285mm x 260mm x 32mm)
- Stainless Main Vertical post 15" (380mm) long, extension post 9" long (225mm). OD 1-1/2" (37mm) for a total post length of 24"
- Stainless Steel Horizontal Post 22.5" long from end to end. (570mm)
- Safety Clamp included
- Post with Tilt Feature for Focus Mount SCW-PA included
- Weight 43lbs

| Order #     | Description                        |
|-------------|------------------------------------|
| 26800B-431A | Double Arm Ball Bearing Boom Stand |

## Deluxe Dual Arm Ball Bearing Boom Standing with Mounting Post



26800-433C

### Features:

- Ultra smooth movement of a ball bearing slide
- Two types of bases available 10" x 10" (254mm x 254mm) and 17" x 20" (432mm x 508mm) Weights 21 lbs and 27 lbs respectively
- 16" (406mm) Stainless Steel Vertical Post (OD 1-1/2"). Other sizes available on request
- Thomson linear ball bearing and dual hardened stainless steel shafting for the horizontal axis. Total horizontal motion 12-1/2" (317.5mm)
- Safety Clamp included
- Optional table mount clamps and C-Clamps available
- Post with tilt feature for focus mount SCW-PA included



26800-433D

| Order #     | Description   |
|-------------|---|
| 26800B-433C | Deluxe Dual Arm Ball Bearing Boom Stand with Mounting Post and 10" x 10" base |
| 26800B-433D | Deluxe Dual Arm Ball Bearing Boom Stand with Mounting Post and 17" x 20" base |



# Stands and Focus Mounts

## Lift Articulating Arm Boom Stand

Stereo Zoom Microscopes



26800-433E



26800-433F

### Features:

- Designed to allow maximum freedom of movement
- Perfect for video and lighting applications that require a lot of movement
- Flexible arm can easily be adjusted into hard to reach locations and out of the way again
- Various mounts and bases available to suit your application
- Vertical Post 16" (406mm). OD 1-1/2"
- Lift Articulating boom arm approximately 30"(762mm) horizontal reach, and approximately 15"(381mm) vertical travel ± 40° movement from horizontal
- Adjustable gas spring counter balance allows "free floating" of 0-20 lbs. Ambidextrous vertical position lock. Gas spring provides controlled "safe" lift and decent
- Mount post with tilt feature included for focus mount SCW-PA
- Safety Clamp included

### Order # Description

|                    |   |
|--------------------|---|
| <b>26800B-433E</b> | <b>Lift Articulating Arm Boom Stand</b><br>with Table Clamp |
|--------------------|---|

|                    |  |
|--------------------|--|
| <b>26800B-433F</b> | <b>Lift Articulating Arm Boom Stand</b><br>with 17" x 20" base |
|--------------------|--|

## Standard Stand



### Features:

- Aluminum powder coated base 11" x 13" x 1/2" (279mm x 330mm x 12.7mm)
- 10 tapped holes for mounting X-Y stages
- 16" Stainless Steel vertical post (OD 0.96", 24.5mm) with safety clamp
- Compatible with focus mount SCW-PA

### Order # Description

|                    |   |
|--------------------|---|
| <b>26800B-433G</b> | <b>Standard Stand</b> with Safety Clamp |
|--------------------|---|

## Ergo Stand



### Features:

- Aluminum powder coated base 13" x 13" x 1/2" (330mm x 330mm x 12.7mm) with Black & White glass plate
- 16" Stainless Steel vertical post (OD 0.96", 24.5mm) with safety clamp
- Compatible with focus mount SCW-PA

### Order # Description

|                    |                                     |
|--------------------|-------------------------------------|
| <b>26800B-433H</b> | <b>Ergo Stand</b> with Safety Clamp |
|--------------------|-------------------------------------|

# Shop Microscopes

## Shop Microscope 40x and 100x



Designed for quick and precise measurements in laboratories, workshops and assembly lines. Comes with a dual scale reticle graduated in both inches and millimeters. A turn of the eyepiece brings the reticle in sharp focus. No calibration is needed. Reticle can be rotated for measurement in any direction. Dual knobs with rack and pinion focusing lets you quickly refine the image. Includes a fully adjustable battery operated penlight illuminator. Scope has a cutaway opening at base for subject manipulation.

### Specifications

| MODEL                                | Shop Microscope 40x | Shop Microscope 100x |
|--------------------------------------|---------------------|----------------------|
| <b>Magnification (Field of View)</b> | 40X (4.5 mm)        | 100 (1.8 mm)         |
| <b>Objective Lenses</b>              | 4x                  | 10x                  |
| <b>Focusable Eyepiece</b>            | 10x with Scale      | 10x with Scale       |
| <b>Measuring Range</b>               | 3.0 mm/0.1"         | 1.0 mm/0.05"         |
| <b>Minimum Gradation</b>             | 0.02 mm/0.001"      | 0.01 mm/0.001"       |
| <b>Working Distance</b>              | 15 mm               | 5.5 mm               |
| <b>Height</b>                        | 200 mm              | 200 mm               |
| <b>Width</b>                         | 65 mm               | 65 mm                |
| <b>Net Weight</b>                    | 570 g               | 580 g                |
| <b>Accessory</b>                     | Penlight            | Penlight             |

### Order # Description

|                   |  |
|-------------------|--|
| <b>26800C-531</b> | <b>Shop Microscope 40x</b> with 3.0mm/0.1" Scale   |
| <b>26800C-532</b> | <b>Shop Microscope 100x</b> with 1.0mm/0.05" Scale |

## Pocket Microscopes 25x



"Pen Size" powerful direct measuring pocket scope for quick close examination. Excellent for detecting flaws or imperfections, surface measurements, examination of fibers, print etc.

Comes with a measuring metric glass reticle. Has beveled opening for gathering and focusing light. Scope has an aluminum case with a satin finish and pocket clip. Furnished in a vinyl sleeve.

### Order # Description

|                   |                               |
|-------------------|-------------------------------|
| <b>26800C-533</b> | <b>Pocket Microscopes 25x</b> |
|-------------------|-------------------------------|

### Specifications

| Magnification | Field of View | Scale Calibration | Measurement Range | Length     | Diameter        |
|---------------|---------------|-------------------|-------------------|------------|-----------------|
| 25x           | 3.24mm        | 0.05mm            | 0-3mm             | 127mm (5") | 11.10mm (7/16") |



# Shop Microscopes

## Illuminated Pocket Microscope 40x



Perfect carry with microscope with 40x magnification. Ideal for on site detailed examination of small areas and objects. Useful for engineers, tool makers, quality control inspectors, field researchers etc.

Has a built in light source that can be turned on by pulling on one arm of the scope. In addition a clear acrylic stand allows ambient light to the object under examination.

Includes a measuring reticle. Operates on two AA batteries not included.

| Order #           | Description                              |
|-------------------|--|
| <b>26800C-534</b> | <b>Illuminated Pocket Microscope 40x</b> |

3D Stereo Zoom Microscopes

## Specifications

| Magnification | Field of View | Scale Calibration | Max Measurement | Field of View | Size         |
|---------------|---------------|-------------------|-----------------|---------------|--------------|
| 40x           | 4.4mm         | 0.05mm            | 4mm             | 25mm          | 140x40x20 mm |

# Loupes & Magnifiers

## Loupes with Scales



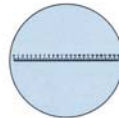
Loupes with reticles for measurement and inspection. Comes with ReticleScale No.1 and Vinyl Case. Optional reticle scales are available.

| Order #      | Description                 |
|--------------|-----------------------------|
| <b>26001</b> | <b>Loupe with Scale 7x</b>  |
| <b>26002</b> | <b>Loupe with Scale 10x</b> |
| <b>26003</b> | <b>No. 1 Reticle Scale</b>  |
| <b>26004</b> | <b>No. 2 Reticle Scale</b>  |
| <b>26005</b> | <b>No. 3 Reticle Scale</b>  |
| <b>26006</b> | <b>No. 4 Reticle Scale</b>  |

### SCALE PATTERNS



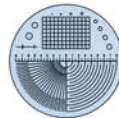
**No.1**  
Lengths in either inches or millimeters can be measured with the appropriate line. Maximum: 0.6" or 16mm



**No.2**  
Lengths can be measured in 0.1 millimeters increments. Maximum: 16mm



**No.3**  
Angles, radius, diameters, widths, etc. can be measured mainly in inches.



**No.4**  
Angles, radius, diameters, widths, etc. can be measured mainly in millimeters.



# Loupes & Magnifiers

## Inspection Eye Loupes



Great for close inspection. Rests comfortably in the eye socket. Lightweight yet sturdy. Plastic mount. Our 8x, 6x and 4x loupes come with rubber cushion for additional comfort.

| Order #      | Description                             |
|--------------|---|
| <b>26034</b> | <b>10x EyeLoupe 1" WD</b>               |
| <b>26041</b> | <b>8x EyeLoupe</b> with Cushion 1" WD   |
| <b>26042</b> | <b>6x EyeLoupe</b> with Cushion 2" WD   |
| <b>26043</b> | <b>4x EyeLoupe</b> with Cushion 2.5" WD |

36

Stereo Zoom  
Microscopes

## Inspection Eye Loupes



Fixed focus magnifiers with clear acrylic base that permits ambient light to illuminate subject for clear bright viewing.

| Order #      | Description   |
|--------------|---|
| <b>26051</b> | <b>10x Inspection Magnifier</b> with 1" Diameter Lens |
| <b>26052</b> | <b>3x Inspection Magnifier</b> with 3" Diameter Lens  |

## Swing Out Inspection Loupes



| Order #      | Description                                     |
|--------------|---|
| <b>26010</b> | <b>10x Hex Loupe</b> 18mm Diameter Triplet Lens |
| <b>26011</b> | <b>10x Loupe</b> 16mm Diameter Triplet Lens     |
| <b>26012</b> | <b>20x Loupe</b> 12mm Diameter Triplet Lens     |

## Giant Folding Loupe



Double glass lens provides a large viewing area. Lens diameter is 1-3/4" and has a magnification of 6x

| Order #      | Description                |
|--------------|----------------------------|
| <b>26013</b> | <b>Giant Folding Loupe</b> |

## Magnifier with Clamp



Has an adjustable 2 1/2" diameter magnifying glass. Allows for close observation of work during soldering operation.

| Order #     | Description                 |
|-------------|-----------------------------|
| <b>2600</b> | <b>Magnifier with Clamp</b> |



# Loupes & Magnifiers

37

Stereo Zoom Microscopes

## Magnifier with Tweezers



Magnifying glass mounted onto a stainless steel, anti acid, anti magnetic tweezers. Lens diameter is 1.25" and the power is 3x. Available with pointed or curved tweezer tips. Excellent for working on small parts that require magnification.

### Order # Description

**26030** 3x Magnifier with Curved Tips

**26031** 3x Magnifier with Straight Tips

## Headband Magnifier with LED Illumination



Comes with 1.5x, 2x, 2.5x and 3.5x clip-on lenses. LED light provides 50,000 hours of illumination. Light operates with 3 AAA batteries not included.

### Order # Description

**26415** Headband Magnifier with LED Illumination

## Headband Magnifier with Light



Comes with 1.2x, 1.8x, 2x and 3.5x clip on lenses. Features a 2.2v bulb and operates with 4 AAA batteries. Batteries not included.

### Order # Description

**26416** Headband Magnifier with Light

## Optivisor



Soft pliable wide headband for ultimate comfort. Easily adjusts to any head size. Self locking, remains in place. Glass lens.

### Order # Description

**26101** Magnification: 1-1/2x Working Distance: 20"

**26102** Magnification: 1-3/4" Working Distance: 14"

**26103** Magnification: 2x Working Distance: 10"

**26104** Magnification: 2-1/2" Working Distance: 8"

**26105** Magnification: 2-3/4" Working Distance: 6"

**26106** Magnification: 3-1/2" Working Distance: 4"

## Accessories

### Order # Description

**26107** Replacement Lens #2

**26108** Replacement Lens #3

**26109** Replacement Lens #4

**26110** Replacement Lens #5

**26111** Replacement Lens #7

**26112** Auxiliary Lens 2-1/2x



# Magnification Lighting

**ProVue Magnifying Lamps** Available in Ivory, Satin Silver, and Antique Copper!



26.501-SSL



26.501-SCP

Our most popular magnifying lamps (now available in a choice of colors) are designed for professionals. It is equipped with an ultra-bright 22-watt circular florescent bulb and a Crystal Clear 5", 3-diopter (1.75x) glass lens to provide 360° distortion free viewing. Metal housing is mounted on a 45" spring balanced arm that stays set in any position. Lamp operates at 115V-AC and comes complete with mounting clamp and a 5-foot power cord. 1-year warranty (excludes bulb).

### Optional Accessories

- Weighted Base
- Swing-Away Lens – 5 diopter (2.25x) for total magnification of 8 diopter (4x)
- Auxiliary Lens – 3 diopter (1.75x) for total magnification of 6 diopter (3.5x)



Swing-Away Lens



Auxiliary Lens

### Order # Description

|                   |  |
|-------------------|--|
| <b>26.501-SIV</b> | <b>ProVue Magnifying Lamp-Ivory</b>          |
| <b>26.501-SSL</b> | <b>ProVue Magnifying Lamp-Satin Silver</b>   |
| <b>26.501-SCP</b> | <b>ProVue Magnifying Lamp-Antique Copper</b> |
| <b>26.501-WTB</b> | <b>Weighted Base</b>                         |
| <b>26.501-B22</b> | <b>22-watt Replacement Bulb</b>              |
| <b>26.501-SLA</b> | <b>Swing-Away Lens – 5 Diopter (2.25x)</b>   |
| <b>26.501-AL3</b> | <b>Auxiliary Lens – 3 Diopter (1.75x)</b>    |

Magnification & Task Lighting

**ProVue Deluxe Magnifying Lamp** 'Features a Heavy Duty Spring Balanced Arm'



Designed for demanding professionals. It is equipped with an ultra-bright 22-watt circular fluorescent bulb, a Crystal Clear 5", 3-diopter (1.75x) lens, mounted on a silver-grey metal housing. The fluorescent bulb is protected with a clear plastic diffuser/splash guard. The heavy-duty adjustable arm with tempered steel springs allows for easy positioning. When fully extended the arm has a reach of 35". Comes with a mounting clamp. Can also be mounted directly on the working surface. Operates at 115V-AC and comes with a 5-foot power cord. 5-year warranty (excludes bulb).

### Optional Accessories

- Swing-Away Lens – 5 diopter (2.25x) for total magnification of 8 diopter (4x)
- Auxiliary Lens – 3 diopter (1.75x) for total magnification of 6 diopter (3.5x)



Swing-Away Lens



Auxiliary Lens

### Order # Description

|                   |   |
|-------------------|---|
| <b>26.501-DSG</b> | <b>ProVue Deluxe Magnifying Lamp-Silver</b> |
| <b>26.501-B22</b> | <b>22-watt Replacement Bulb</b>             |
| <b>26.501-SLA</b> | <b>Swing-Away Lens – 5 diopter (2.25x)</b>  |
| <b>26.501-AL3</b> | <b>Auxiliary Lens –3 Diopter (1.75x)</b>    |

# Magnification Lighting

## Maxi-Mag Magnifying Lamp



Super large 7", 3-diopter lens gives you unrivaled field of view and work space. Comes with a powerful 32-watt circular fluorescent bulb. This lamp can show you things that you have never seen before! The Ivory mar-resistant engineered plastic housing is mounted on a 45" spring balanced arm for easy positioning. Lamp operates at 115V-AC and comes complete with a mounting clamp and a 5-foot power cord. 1-year warranty (excludes bulb).

### Optional Accessories

- Weighted Base
- Swing-Away Lens – 5 diopter (2.25x) for total magnification of 8 diopter (4x)



Swing-Away Lens

| Order #           | Description                                |
|-------------------|--|
| <b>26.503-SIV</b> | <b>Maxi-Mag Magnifying Lamp – Ivory</b>    |
| <b>26.503-B32</b> | <b>Replacement Fluorescent Bulb</b>        |
| <b>25.501-WTB</b> | <b>Weighted Base</b>                       |
| <b>25.501-SLA</b> | <b>Swing-Away Lens – 5 Diopter (2.25x)</b> |

## Mighty Mag Magnifying Lamps



The Mighty Mag features a large 7" x 5.2", 3-diopter (1.75x), distortion free Crystal Clear lens mounted in a high tech style mar-resistant engineered plastic housing with dual light sources. The large, rectangular viewing area of the glass enables comfortable viewing with both eyes and provides shadow-free magnification with light coming from both sides. The housing is mounted to an internal spring balanced arm with a 30" reach that will set in any position. Unit operates at 115V-AC and comes complete with mounting camp and a 5-foot power cord. 1-year warranty (excludes bulb). Available in Ivory and Black (ESD safe).

### Optional Accessories

- Swing-Away Lens – 5 diopter (2.25x) for additional magnification

| Order #           | Description                                |
|-------------------|--|
| <b>26.505-SIV</b> | <b>Mighty Mag Magnifying Lamp – Ivory</b>  |
| <b>26.505-ESD</b> | <b>Mighty Mag Magnifying Lamp – Black</b>  |
| <b>26.505-BO9</b> | <b>Replacement Bulb</b>                    |
| <b>26.501-SLA</b> | <b>Swing-Away Lens – 5 Diopter (2.25x)</b> |
| <b>26.506-BT4</b> | <b>Black Light Bulb</b>                    |





# Magnification Lighting

## MaxiVue Magnifying Lamp



The MaxiVue offers a fully adjustable magnifier lens (can be rotated) for full range inspection capabilities. Unnecessary slouching is eliminated. Three 9-watt compact fluorescent lamps provide two light levels: 27-watts from top and both sides of the magnifier or 18-watts of side-to-side lighting. Features a large 6.9" x 4.2", 3-diopter (1.75x) Crystal Clear lens, mounted on a mar-resistant engineered plastic housing. The spring balanced arm has a 40" reach and stays in any position. Operates at 115V-AC and comes complete with a mounting clamp and a 5 foot power cord. 1 year warranty (excludes bulbs).

### Optional Accessories

- Weighted Base

### Order # Description

|                   |  |
|-------------------|--|
| <b>25.506-SIV</b> | <b>MaxiVue Magnifying Lamp - Ivory</b> |
| <b>26.501-WB</b>  | <b>Weighted Base</b>                   |
| <b>26.505-B</b>   | <b>Replacement Bulb</b>                |
| <b>26.506-BT4</b> | <b>Black Light Bulb</b>                |

## VuePlus Magnifying Lamp



VuePlus features a 4", 3-diopter Crystal Clear lens. Comes with a 60-watt incandescent bulb which provides "incident lighting" for viewing irregular work surfaces. Comes with a 30" spring balanced arm with a tension control knob at the arm joint, a 75-watt incandescent bulb and a table mounting clamp. Operates at 115V-AC.

### Order # Description

|                   |  |
|-------------------|--|
| <b>26.504-SBK</b> | <b>VuePlus Magnifying Lamp - Black</b> |
|-------------------|--|

## OptiVue Magnifying Lamp



OptiVue combines function and form in one small package. With a powerful 13-watt fluorescent bulb, an all capable 3-diopter lens, and a highly flexible gooseneck, this small "goes anywhere" dynamo provides illumination and magnification wherever you need.

### Order # Description

|                   |  |
|-------------------|--|
| <b>26.507-SBK</b> | <b>OptiVue Magnifying Lamp - Black</b> |
|-------------------|--|

# Task Lighting

## Titan Halogen 150 Watt Task Light



Provides clean and crisp light. Features a powerful 150-watt bulb mounted in a black metal housing. Comes complete with a 35" spring balanced arm with tension control and c-mounting clamp. Operates at 115V-AC.

Order # Description

|                   |                                  |
|-------------------|----------------------------------|
| <b>26.512-SBK</b> | <b>Titan 150-watt Task Light</b> |
|-------------------|----------------------------------|

## Elumina 50 Watt Task Light



With a contemporary design, the Elumina task light allows you to direct light where you need it. Adjustable arm extends 23 inches from the weighted base. Lamp includes a 50-watt halogen bulb. Silver Satin Finish. Comes with a 5-foot power cord. Operates at 115V-AC.

Order # Description

|                   |                                   |
|-------------------|-----------------------------------|
| <b>26.511-SSL</b> | <b>Elumina 50-watt Task Light</b> |
|-------------------|-----------------------------------|

## Aurora Combo Lamp



Features a 9 1/2" shade with a 22-watt fluorescent and a 60-watt incandescent bulb. A 3-way switch permits selection of fluorescent or incandescent or both. A 42" adjustable spring balanced arm with tension control allows you to position the lamp exactly where you require. Ivory color. Comes with a c-mounting clamp and a 5-foot power cord. Operates at 115V-AC.

Order # Description

|                   |                          |
|-------------------|--------------------------|
| <b>26.515-SIV</b> | <b>Aurora Combo Lamp</b> |
|-------------------|--------------------------|



# Task Lighting

## Magna Fluorescent Lamp



Features a flexible 42" spring balanced arm supplied with two 15-watt fluorescent tubes that provide uniform light. 19" rectangular head features a handle that permits easy positioning. Comes with a c-mounting clamp and a 5-foot power cord. Operates at 115V-AC.

| Order #           | Description                   |
|-------------------|-------------------------------|
| <b>26.516-SIV</b> | <b>Magna Fluorescent Lamp</b> |

43

## Magna Deluxe Fluorescent Lamp



A whole new class of elegant looking fluorescent light from Aven designed to give you crisp, flicker-free lighting, and a maximum uniformity together with a larger lighting area. The 20" lighting head is totally enclosed and features a 55 watt fluorescent bulb. Features a built-in electronic ballast for increased lumen.

The heavy duty industrial grade adjustable arm with tempered steel springs and tension control knobs allows you to easily position the lamp where you want it. The head swivels 310° and tilts 210° for maximum adjustment. Comes with a mounting clamp and a 5 ft power chord. Operates 115V-AC. 1-year warranty (excludes bulb).

| Order #            | Description                              |
|--------------------|--|
| <b>26.516-D155</b> | <b>Magna Deluxe 20" Fluorescent Lamp</b> |

Magnification & Task Lighting

## Sirus Quartz Halogen Task Lights



Excellent for all types of applications requiring high intensity illumination, such as manufacturing, assembly, and inspection. Round tube arms are vibration resistant but can be adjusted to provide the lighting angle you require (Also available with a flex arm). Lamp Head can be moved in up and down direction. 20 Watt Halogen bulb included. Can accept up to 50 watt bulb. C-Clamp is included. Optional Magnetic Base also available. Industrial Grade Quality. 1-year warranty (excludes bulb).

| Order #          | Description                              |
|------------------|--|
| <b>26.521</b>    | <b>Short Arm Task Light</b>              |
| <b>26.522</b>    | <b>220mm (8.66") Arm Task Light</b>      |
| <b>26.523</b>    | <b>440mm (17.32") Arm Task Light</b>     |
| <b>26.524</b>    | <b>800mm (31.5") Arm Task Light</b>      |
| <b>26.525</b>    | <b>520mm (20.5") Flex Arm Task Light</b> |
| <b>26.520-MB</b> | <b>Magnetic Base</b>                     |